

TD-120 - Installation Manual

Thank you for your purchase!

Thank you for shopping with us. The TD-120 has been designed to replace the display board and screen of a TD-12/20/20X, since Roland stopped supplying replacement screens many years ago.

We recommend installation by a qualified technician, although it is possible to replace the screen by carefully following these steps:

Opening your Roland Module

We suggest you take several photos of each stage of opening your module. We also recommend using small glasses to place the screws as you dismantle it.

You need to remove the screws on the outside of the module, open it up and remove the boards above the display circuit.

You can watch the disassembly process for the TD-20 here: <https://youtu.be/qrsfNHQQ9X4>
(Start at 40 seconds)

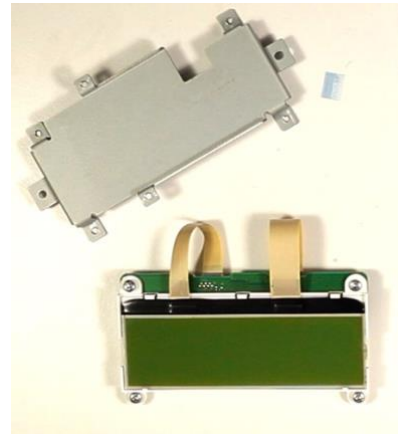
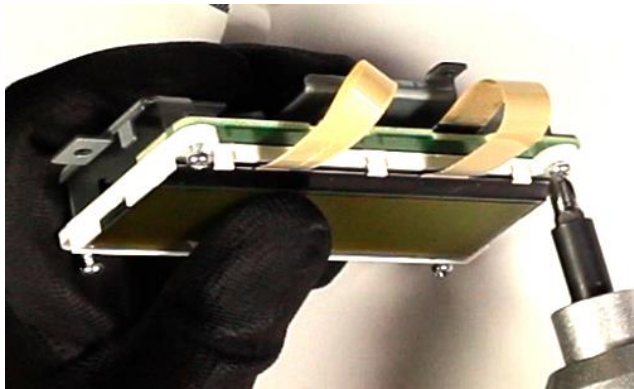
For the TD-12, the process is similar and is shown here: <https://youtu.be/vpn4yYdbGmE>
(Ignore the first 40 seconds)

Due to their age, **flat cables** can become oxidized and cause poor contact. We recommend replacing the screen connection with the supplied ribbon.

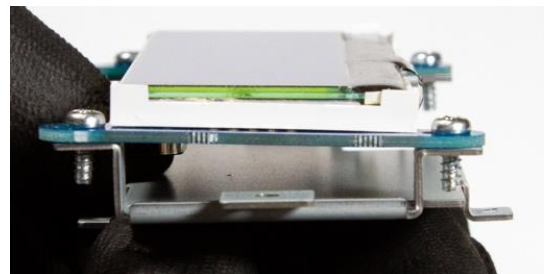


Display on the TD12 module

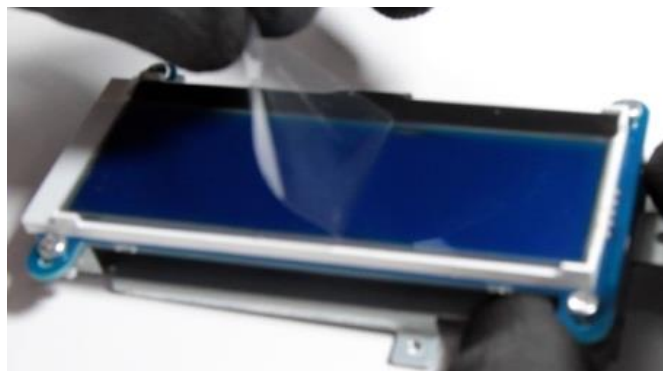
The TD12 module is simple and straightforward to change. No assistance is required. Simply attach it to the metal bracket.



1 - Remove the display from the stand



2-Fix TD-120 to the bracket



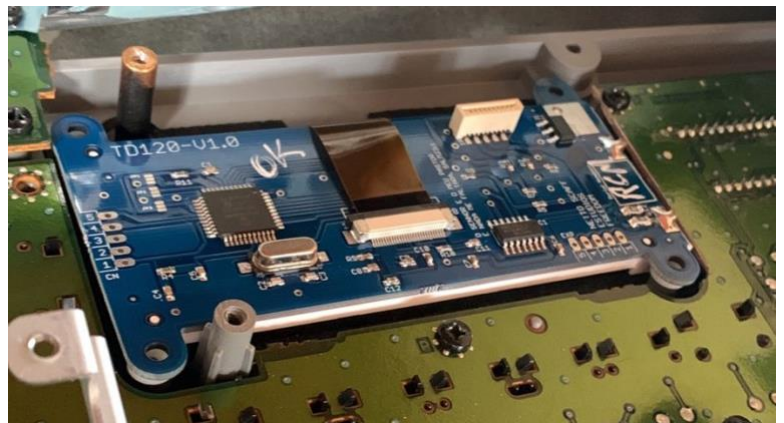
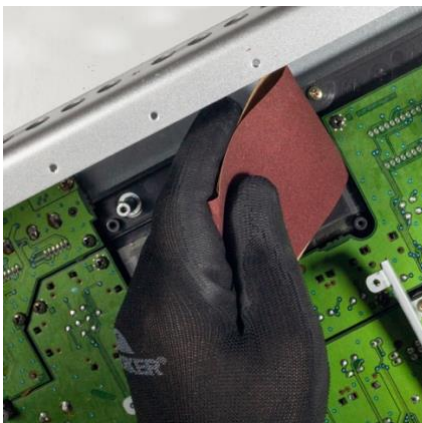
3-Remove the film and attach it to the base.

Replacing the display on the TD-20/20X

On the TD20 or TD20/X, a small adjustment on one side may be necessary for a perfect fit.



1 - Note, the right side may not fit. Don't force it.

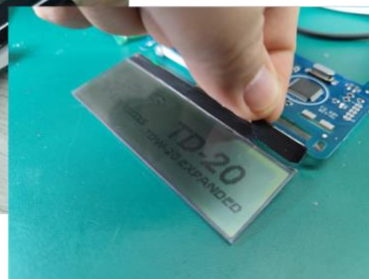
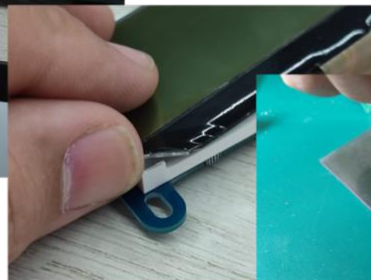


2-You will need to sand it down by 2mm. Test the fit.

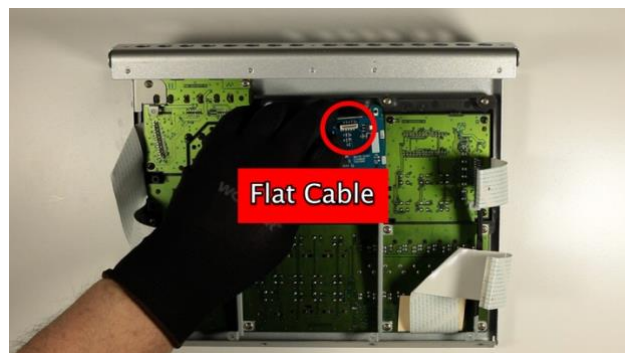
It is crucial to use the included spacers!!



3-Use white glue to fix the spacers



The TD-120 board is thinner than the original backlight, so without the washers it can break. The warranty does not cover this type of assembly error.



5- Watch out for the position of the flat cable

Visit our websites and our YouTube channel for more information and support.

www.td120lcd.com